



Socioeconomics

News

Newsletter of the Socioeconomics Section of the American Fisheries Society

Spring 2001

Socioeconomics Section

From the President's Desk

Officers

President

Ray Rhodes
South Carolina Dept. of Natural
Resources
Division of Marine Resources
(843) 762-5040
rhodes@mrd.dnr.state.sc.us

President-elect

(TBD)

Secretary-Treasurer

Peter Fricke
NOAA/NMFS
(301) 713-2338
peter.fricke@noaa.gov

Newsletter Editor

Herb Holloway
Louisiana Dept. of Wildlife and
Fisheries
(225) 765-2605
holloway_ha@wlf.state.la.us

Greetings!

The months are flying by since I came aboard as the Section's President in August 2000. Of course, there is not enough time to get done all of the things we want to do. Regardless, the Section got the ball rolling in August by organizing and conducting a new AFS Continuing Education workshop, "Fishery Economics for Non-Economists," at the AFS Annual Meeting in St Louis. John Whitehead from East Carolina University was the main lecturer for this workshop.

We have made significant progress on several projects since August that were initiated at the Section's business meeting in St. Louis. We established a Working Group on the Evaluation of Fish Kills. This Group was critical to providing input to the AFS Executive Director's office in preparing a proposal for the U.S. Fish & Wildlife Service to fund a project to update and revise the replacement values data in Special Publication 24, Investigation and Valuation of Fish Kills, published in 1992.

In conjunction with the Missouri Chapter of the AFS, we will be establishing a new student award for the AFS, the A. Stephen Weithman, Jr. Award, for the best paper or presentation at the AFS annual meeting on a socioeconomics related topic. This award will be in memory of Steve Weithman, a strong advocate of socioeconomic research at the Missouri Department of Conservation, who died in July 2000.

The Section also organized a special session on socioeconomics (see "Section News" in this newsletter) for the Southern Division AFS Midyear Meeting in Jacksonville, Florida, during February 2001. In addition, we assisted the National Marine Fisheries Service in setting up their training workshop, Economic and Social Impact Assessment, at the Jacksonville meeting site on February 22. We also managed to squeeze in a short Section business meeting while in Jacksonville.

---- Continued on page 2 ----

From the President's Desk – continued

Last, but not least, Chuck Adams of the University of Florida took on the task of revising the Section's brochure and setting up a new Section web page,

<http://www.fisheries.org/socioecon/>.

We will be mailing you a copy of the new brochure very soon.

Enough looking back – we need to finish up tasks we started in 2001 and plan for 2002. One of our major tasks is to build up our membership. Unfortunately, the Section's membership has declined from 142 in 1996 to 108 in July of 2000. Revising and mailing out our brochure to past members will be one small step towards increasing our membership. We are also planning to pick up the pace on publishing the newsletters and expand our new web page. **As corny as it may sound, the future of the Section is now! Each member needs to help recruit new members and invite past members back into the fold.**

We will be sending you details on the date and time of the Section's business meeting at the AFS annual meeting in Phoenix (August 19-23, 2001) and I look forward to seeing you in Arizona. Please keep in touch; we always want to know about your current projects and needs.

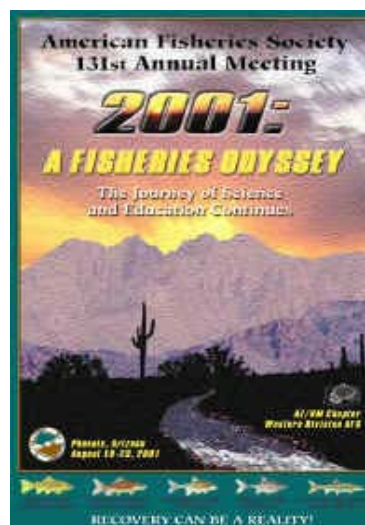
--Ray Rhodes
rhodesr@mrd.dnr.state.sc.us

The American Fisheries Society presents the 131st Annual Meeting

2001: A Fisheries Odyssey

The Journey of Science

and Education Continues



Phoenix, Arizona

August 19-23, 2001

Hosted by:

Arizona-New Mexico Chapter and

Western Division of AFS

“A rational approach to fisheries management would seek whatever information is relevant and available. However, in democratic societies, regulatory decisions are vulnerable to political pressure, lobbying, manipulation, logrolling, and even sabotage. In the fisheries, as in other sectors of the economy, this is an integral and ‘normal’ part of the regulatory process in most countries. Therefore, better knowledge will not necessarily change the course of events. ‘Knowledge is power’, the saying goes, but not always.”

Jentoft, Svein and Knut A. Mikalsen. “Regulating Fjord Fisheries: Folk Management or Interest Group Politics?” in Folk Management in the World's Fisheries. Dyer, Christopher L. and James R. McGoodwin, Editors.

Section Minutes

American Fisheries Society Socioeconomics Section

Minutes of the Mid-Year Membership Meeting
Jacksonville, FL
February 23, 2001

Call to Order and Welcome: The meeting was called to order by Section President Ray Rhodes at 4:10 p.m. President Rhodes welcomed the 13 members present, and explained that this mid-year meeting in conjunction with the AFS Southern Division meeting provided an opportunity for members and officers to discuss Section issues and exchange information. The mid-year meeting was not a substitute for the Section's annual meeting, which will be held in conjunction with the AFS Annual Meeting, in Phoenix, AZ on August 19-22, 2001. President Rhodes reminded the meeting that nominations for officers (president, president-elect, and secretary-treasurer) for 2001-2002 were more than welcome, and that elections would be held in June prior to the Section's annual meeting.

Agenda: A draft agenda was circulated and adopted without change.

Old Business:

Treasurer's Report: Secretary-Treasurer Peter Fricke reported that the balance in the Section's account was \$6,864.13 on February 21, 2001. The Section's funds are held in an interest-bearing checking account currently earning 3.81 percent APR. It was reported that the "Fishery Economics for Non-Economists" workshop held at the annual meeting in St. Louis, and capably organized and taught by John Whitehead, assisted by Ray Rhodes, had earned the Section \$287 after expenses. To date the AFS web-site fee had been \$100 and had been paid in December, 2000. Outstanding bills were those for the design and printing of the Section's new brochure and design and creation of the Section's web page.

In the discussion following the report, President Rhodes urged members to consider developing short course materials and workshops which the Section could propose for the 2002 AFS Annual Meeting in Baltimore.

Status of the Section's Internet Site: Past President Chuck Adams reported that the Section's web-page was now complete and was part of the AFS web-site. The design of the page has been kept simple for the time being and is based on the design of the new brochure. The address is www.fisheries.org/socioecon/ President Rhodes thanked Dr. Adams for his hard work on this project.

Status of the Section's Revised Brochure: Past President Adams reported that the brochure had been revised and was now at the printers. The first print run would be 500 copies. Copies of the final version were distributed and were discussed by those present. It was agreed

that copies of the brochure would be sent to all Section members together with a request that the members share them with colleagues. President Rhodes agreed to assess the need for any changes in the brochure suggested by members, and to assess the number of copies needed in a second print run.

Student Award (A. Stephen Weithman, Jr. Award): The Missouri Chapter had proposed the award, for the best student paper in socio-economics presented at the AFS annual meeting, at the Section's annual meeting in St. Louis and had invited the section to join the Chapter in co-sponsoring it. President Rhodes reported that he had been discussing the new student award with the Missouri Chapter and proposed a set of scoring criteria for oral presentations. He noted that students who wished to be considered for AFS awards checked off a box on the meeting pre-registration form, and their papers were then audited by members of an awards committee. There was considerable discussion of the mechanics of the evaluation of the presentations. Many present believed that the completion of a paper was an essential component of an award and also that poster presentations should be eligible for the award. It was **agreed** that John Whitehead (ECU) would revise the scoring criteria. It was also **agreed**, for the 2001 AFS meeting in Phoenix, Peter Fricke (NMFS) would contact the meeting organizers and obtain the names and topics of students who were submitting papers and posters and winnow out the social science papers submitted. There was discussion of the amount and nature of the award. It was proposed that a monetary sum (say \$100) and the registration fee for the next annual meeting comprise the award. This would recognize the achievement at the meeting at which the paper was presented and encourage the student to return the following year. The approximate annual cost of this award would be some \$150 each to the Chapter and Section. President Rhodes agreed to discuss this with the Missouri Chapter.

Monetary Valuation of Fish Kills Working Group: President Rhodes reviewed the progress of the working group [Ray Rhodes, John Whitehead (ECU), Herb Holloway (Louisiana DWF) and Wayne Davis (Kentucky DFWR)] examining AFS Special Publication 24 (SP 24), "Investigation and Valuation of Fish Kills". He noted that the publication was dated now and the states that used it as the basis for assessing monetary compensation for damages were concerned that it no longer reflected current values. The publication was in two parts—(a) methods of assessing fish kills and (b) methods of valuing and compensating for fish kills—and the second part needed considerable revision to bring it up to date. New hatchery data was needed as was up-to-date pricing data. SP 24 did not include valuations for marine fish kills, and this needed to be added. The field of valuation had amassed considerable experience since SP 24 was compiled, and the new literature, models, practices, and recent litigation needed to be discussed and evaluated in the revised version. President Rhodes reported that he had been in touch with AFS publications concerning revision. He also reported that AFS Executive Director Gus Rassam and AFS President Carl Burger had asked him this afternoon (February 23) about possible revision of SP 24, and had indicated that Federal pass-through funding might be available for working group travel and contracts to gather information. President Rhodes said that the working group would be convening tomorrow to discuss a work plan and prepare a proposal for the Society.

Section Newsletter: Newsletter Editor Herb Holloway reported that he had received the minutes for the Annual Meeting of the Section, but little else. He urged those present to share any news and information they might have. It was **agreed** that those present would pass on information about regional events, meetings, conferences, research in progress, policy issues, books and publications to Herb Holloway (Holloway_HA@wlf.state.la.us Louisiana Dept. of Wildlife and Fisheries, 2000 Quail Drive (Room 220), P.O. Box 98000, Baton Rouge, LA 70898-9000) by **March 15**.

New Business

Social Impact Assessment and CEQ: Peter Fricke, a member of the Interorganizational Committee on Guidelines and Principles for Social Impact Assessment, reported that the Committee was completing revision of their 1993 document (published by NOAA as NMFS-F/SPO-16 in 1994). The Committee, with members from Federal natural resource agencies and professional societies, had been invited to discuss its work with the [White House] Council on Environmental Quality. The purpose of the meeting was to determine whether the voluntary "best practice" guidance should be adopted by CEQ as standards for natural resource-related SIAs.

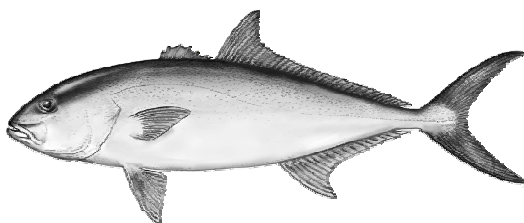
Presentation of Plaque: Past President Chuck Adams was presented with a plaque as a commemoration of his hard work as Secretary Treasurer for the Section (1988-2000) and the Section's President in 2000-2001.

Adjournment: There being no further business, President Rhodes adjourned the meeting at 5:25 p.m.

Members in Attendance: Ray Rhodes (President), Charles (Chuck) Adams, Richard B. Allen, Darren Benjamin, Theo Brainerd, Peter Fricke, Herb Holloway, Clifford Hutt, Linda Lucas, Karen Mumford, Brendan O'Neill, Mike Travis, John Ward, and John Whitehead

Attention! Attention! Attention!

You may have noticed that our President-elect shown on page 1 is (TBD), i.e. **To Be Determined**. As TBD's leadership skills are somewhat suspect, we would like to have someone with more knowledge and experience in this important position. As a matter-of-fact, we need nominations for all **three** of our elected offices – President, President-elect, and Secretary-Treasurer. So do some brainstorming, make some contacts, and **get those nominations in to Ray Rhodes by June 15, 2001**.



More Section Minutes

American Fisheries Society

Socioeconomics Section

Draft **Minutes** of the Business Meeting of the Section
Monday, August 31, 2000; St. Louis, MO

In attendance: Ray Rhodes (chair, President-elect), Chuck Benedict, Theo Brainerd, Wayne Davis, Ron Dent, Peter Fricke (Secretary-Treasurer), Geoffrey Habron, Herb Holloway, Robert Kendall, John Whitehead. Apologies for absence were received from Chuck Adams (President), Madeleine Hall-Arber and Bonnie McCay.

Call to Order: Ray Rhodes welcomed members and called the meeting to order at 7:35 am

Minutes of the 1999 Business Meeting: (The draft minutes of the 1999 meeting, held on August 29 in Charlotte, NC, were printed in the Spring 2000 edition of the Section Newsletter, pp.11-13) **Motion** to adopt the draft minutes as written was made by John Whitehead, seconded by Herb Holloway. The motion was adopted by acclamation.

Treasurer's Report: Peter Fricke reported that the beginning balance for 1999 was \$7006.40 and the ending balance (August 21, 2000) was \$6133.27. Income for the year was \$289.74 (member dues and bank interest). Expenses for the year were \$1162.87 (\$1000 donation to AFS; \$25 for commemorative plaque; \$137.87 postage and printing for newsletter). The Section's funds were moved in the Fall of 1999 to an interest bearing checking account. **Motion** to adopt the treasurer's report for 1999 was made by Geoffrey Habron, seconded by Theo Brainerd, and adopted unanimously.

Old Business:

Section Brochure: Peter Fricke reported he hoped to have the membership brochure revised by the end of September. Chuck Adams plans to have the brochure printed and available before the Mid-Year Meeting of the AFS Southern Division in Jacksonville, FL (February 23-25, 2001).

Section Web page: Ray Rhodes reported that Chuck Adams was working on the design of the Section's web page with colleagues from the University of Florida. The web page was to be attached to the AFS web page in order to provide easy access by society members and others and to reduce costs. The annual fee to the Section for maintenance and use of the site provided by AFS was estimated to be between \$50 and \$125/annum. Cost of design should not exceed \$300.

Newsletter: Herb Holloway agreed to take on the responsibilities of Newsletter editor for 2000-2001. It was noted in floor discussion that the Newsletter needed more input on issues and research in freshwater fisheries.

Membership: Peter Fricke reported that Section membership had declined to 108 persons in July 2000. He noted that the Section needed 200+ members to have an active voice in AFS affairs and governance. There was a general discussion of the need to retain and attract members. Those present agreed on the following suggestions:

- * Sponsor more workshops at AFS annual meetings as a Section and cooperatively with other Sections. Possible topics include tribal/minority issues (Geoffrey Habron is working on a workshop and symposium on this topic with the Equal Opportunities Section for the 2001 meeting); user conflicts; marine and aquatic reserves; commercial and recreational fishing quotas; and techniques of social impact analysis using GIS.

- * Prepare and publish two or three Newsletters each year. This will require member input and help to the Newsletter Editor.

- * Focus more on regional AFS meetings. It was noted that the workshops and sessions organized at regional meetings in the early 1990s had been very effective in building interest in the Section and in establishing its relevancy in AFS.

- * Consider joint meetings or workshops with other organizations (e.g. Rural Sociology Society, IAFE, IAIA, etc.) since many Section members have membership links to other societies.

- * Ask Section members to distribute Section brochures to their colleagues at work and at professional meetings.

- * Recruit graduate students through Section members in academia.

New Business:

Installation of Officers for 2000: Ray Rhodes took the gavel as President, Peter Fricke continued as Secretary-Treasurer, and Herb Holloway was welcomed as Newsletter Editor. The office of President-Elect is vacant at this time, since no candidate(s) has offered their name(s).

AFS survey of salaries: Ray Rhodes reported that the AFS Governing Board had requested the Section's help in analyzing the recent survey data on Society members salaries and demographic information, and in developing comparisons with other professions. Anyone interested in volunteering to help should contact Ray.

Economics Workshop at Annual Meeting: Ray Rhodes reported that the Fishery Economics workshop at this annual meeting had been well attended, and thanked John Whitehead for being the principal organizer and lecturer. A portion of the fees received by the annual meeting organizers for the workshop would be returned to the Section.

Special session at the Southern Division Mid-Year Meeting: Ray Rhodes reported that he was organizing a special social sciences and economics session at the Southern Division Mid-Year Meeting (February 23-25, 2001) in Jacksonville, FL.

Membership Committee: Ray Rhodes stated he was forming an ad-hoc committee of the Section to address membership issues. John Whitehead and Chuck Adams had volunteered to be members, and other volunteers and assistance would be welcomed.

Monetary Values of Fish Kills: Wayne Davis (Kentucky Department of Fish and Wildlife Resources) requested that the Section consider revising and updating the monetary values in AFS Special Publication 24. A working group was set up to look at this issue. Members who volunteered to be on the working group were John Whitehead, Herb Holloway, and Ray Rhodes. Other interested Section members should contact Ray Rhodes.

Award in memory of A. Stephen Weithman, Jr.: Ron Dent (Missouri Department of Conservation) asked that the Section consider joining with the Missouri Chapter in establishing an award for the best socio-economic paper presented by a student at the Annual AFS Meeting. The Missouri Chapter intended providing some funds towards this annual award and wished the Section would join them. **Motion** that the Socioeconomics Section work with the Missouri Chapter to establish the A. Stephen Weithman, Jr. Award for the Best Student Paper in Fishery Socio-economics was proposed by Herb Holloway, seconded by Geoffrey Habron, and passed unanimously.

Presentation on the 2001 AFS Meeting: Chuck Benedict (Arizona Department of Fisheries) invited the Section to propose sessions and symposia for the 2001 AFS Meeting in Phoenix, AZ. The meetings would be held in the Phoenix Crowne Plaza Hotel complex, and the organizing committee was planning to hold the registration fees at the current levels. Dates of the meeting are August 19-23, 2001.

Adjournment: There being no other business, a **Motion** to adjourn was made by Theo Brainerd, seconded by Herb Holloway, and passed unanimously. The meeting adjourned at 8:25 am.

Section News

Section Sponsors Training Course at Annual Meeting

A Continuing Education course, "Fishery Economics for Non-Economists" was conducted at the AFS Annual Meeting in St. Louis, MO, on August 20, 2000. Ray Rhodes, SC Department of Natural Resources, and John Whitehead, East Carolina University, organized the course. John was the main lecturer for this applied microeconomics oriented course with Ray changing the pace with different application oriented discussions. The course included several short quizzes and ample opportunities for discussions by the attendees. The course topics included an introduction to the basic concepts of microeconomics, static bioeconomics of commercial fisheries, an overview of benefit-cost analysis, methods for evaluating recreational fisheries, and the role of economic analysis in the application of state and federal fishery laws. The Socioeconomics Section "netted" about \$300 from the course and, more importantly, twelve AFS members expanded their understanding of fishery economics. These members also earned 0.6 PDQ Points as part of the AFS Certified Fisheries Professionals Program. John and Ray are making plans to offer an updated version of the same course at the 2002 AFS Annual Meeting in Baltimore, MD.

Southern Division Midyear Meeting

A special session sponsored by the Socioeconomics Section was held at the Southern Division AFS Midyear Meeting in Jacksonville, Florida, February 22-25, 2001. The following were the titles and authors for this special session, "Socioeconomics and Fisheries Management":

Moderator: Peter Fricke, National Marine Fisheries Service, Silver Springs, MD.

Florida Fishing Communities: Integrating Identification, Definition and Dependence

Michael Jepson and Steve Jacob, Department of Family, Youth and Community Science, IFAS, PO Box 110310, University of Florida, Gainesville, FL, 352-846-1000, (FAX) 352-392-8196, mej@gnv.ifas.ufl.edu.

Fishing Communities, Economics or Anthropology?: The Case of Madierra Beach, Florida

Linda E. Lucas, Professor of Economics and Kristy L. Mattice, Department of Economics, Eckerd College St. Petersburg, FL 33711, 727- 864-8425.

Civil Restitution Values and Methods Currently in Use by State Fish and Game Agencies

Herb A. Holloway, Louisiana Department of Wildlife and Fisheries, P.O. Box 98000, Baton Rouge, LA 70898-9000 (225)-765-2605, holloway_ha@wlf.state.la.us.

The Economic Effects of *Pfiesteria* in the Mid-Atlantic Region

Timothy Haab¹, John Whitehead^{2*}, Douglas Lipton³, James Kirkley⁴, George Parsons⁵

¹Department of Agricultural, Environmental and Development Economics, Ohio State University, Columbus, OH 43210,

²Department of Economics, East Carolina University, Greenville, NC 27858, ³Department of Agricultural and Resource

Economics, University of Maryland, College Park, MD 20742, ⁴Virginia Institute of Marine Science, School of Marine

Science, College of William and Mary, Gloucester Point, Virginia 23062-1346, ⁵Departments of Economics and Marine

Studies, University of Delaware, Newark, DE 19716.

Management Implications of Market Segmentation of Virginia's Anglers

Brendan M. O'Neill, Department of Fisheries and Wildlife Sciences, Virginia Tech, Blacksburg, VA 24061-0321; (540) 231-5320; boneill@vt.edu and Steve L. McMullin, Department of Fisheries and Wildlife Sciences, Virginia Tech, Blacksburg, VA 24061-0321; (540) 231-8847; smcmulli@vt.edu.

Economic Analyses and Federal Mandates

Theo R. Brainerd, Regulatory Services Division (F/SF5 -13212), Office of Sustainable Fisheries, National Marine Fisheries Service, National Oceanic and Atmospheric Administration, 1315 East West Highway, Silver Spring, MD 20910-3282, 301-713-2337, (FAX) 301-713-0596.

Georgia's Socio-Economic Pilot Study of its Blue Crab Fishery: An ACCSP Exercise

Doug Haymans, Georgia Department of Natural Resources, Coastal Resources Division, One Conservation Way, Brunswick, GA 31520, doug_haymans@coastal.dnr.state.ga.us.

Capacity, Excess Capacity, and Fisheries Management II

John Ward, Office of Science and Technology, National Marine Fisheries Service, 1315 East West Highway, Silver Spring, MD 20910, 301-713-2328.

Use of the Classic Fishery Production Function to Illustrate the Interaction between Biology and Economics in Fishery Management – Focus on the Lobster Fishery

Richard B. Allen, F/V Ocean Pearl, 35 Bliss Rd, Wakefield, RI 02879.

Industry Heterogeneity, Collective action and Commons Management: Lessons from Industrial Fisheries

Brian Potter, Assistant Professor, Department of Political Science, Tulane University, New Orleans, LA 70118, 504-862-8306, (Fax) 504-862-8745, bpotter@tulane.edu.

Market Quota System: A Foundation of Fairness

Steven J. Scannell, 5 Mizzenmast Road, Nantucket, Ma. 02554, scannell@nantucket.net.

Abstracts of the above papers can be obtained from Ray Rhodes (rhodesr@mrd.dnr.state.sc.us) or by directly contacting the authors.

Member Activities

Darren Benjamin

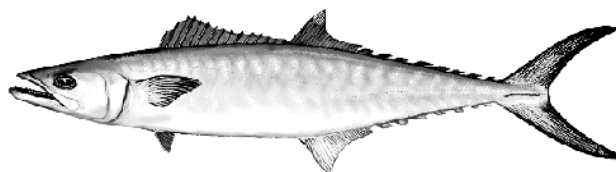
Atlantic States Marine Fisheries Commission Committee on Economics & Social Sciences

Fishery management decisions have major consequences to both recreational and commercial fishermen, as well as effects on the general public in terms of tourism, economic growth, and other social and economic factors. Historically, the Commission has no formal mechanism for integration of social and economic information in the fishery management planning process. With the passage of the Atlantic Coastal Fisheries Cooperative Management Act (ACFCMA) in 1993, the Commission now has direct guidance in the consideration of social and economic data in the development of fishery management plans. Several specific references to inclusion of social and economic information are included in the Commission's Standards and Procedures. In 1995 the Commission concluded that a formal process of utilizing social and economic information in the Commission management process was necessary.

The Commission appointed state, federal, university, and industry economists and social scientists to a Committee on Economics and Social Sciences (CESS). The CESS was charged with evaluating where the Commission was in terms of utilizing social and economic information in the Commission's fishery management decision-making process, and to develop mechanisms to provide for better integration of social and economic information to support fisheries management. As an important first step, the CESS has developed guidelines for inclusion of social and economic information in all Commission fishery management plans. The CESS appoints economists and social scientists to work with the Commission's Interstate Fisheries Management Program to assist in the compilation and analysis of social and economic information, and to assist in the writing of relevant sections of Commission fishery management plans. For more information about the Interstate Fisheries Management Program, visit the ASMFC web page at www.asmfc.org.

One of the limitations to integrating socioeconomic information into fishery management plans has been a lack of comprehensive data. The CESS is currently assisting the Atlantic Coastal Cooperative Statistics Program (ACCSP) with developing the social and economic data collection aspects of the program, including the oversight of a pilot study currently underway in the Northeast Region. The main goals of the pilot study are to (1) identify and address potential problems with the mechanics of implementing the ACCSP commercial socioeconomic data gathering system; (2) field test the survey instrument across various cultural and socioeconomic contexts; (3) to verify several standard economic models. Knowledge gained from the pilot study will be applied towards the implementation of regular, standardized socioeconomic surveys coastwide. For more information about the pilot study, visit the ACCSP web page at www.accsp.org/pilot_study_home.html.

This article was submitted by the Atlantic States Marine Fisheries Commission. For more information, contact Darren Benjamin, Fisheries Research Specialist, at (202) 289-6400 or dbenjamin@asmfc.org.



Geoffrey Habron

Greetings!

I organized a **set of talks** at the Michigan Chapter of AFS March 5. The talks were:

2001 Michigan Chapter annual meeting.
Session convener: "Closing the gap
among citizens, science and conservation."

Geoffrey Habron. Michigan State University. "Community-based
Adaptive Watershed Management: Closing the
Gap Between Citizens and Scientists."

Eric Buhr. Fowler High School. "Lead Them to the Water, Then Make
them Think! Studying Stream Ecology and
Fisheries in a High School Biology Course."

Howard Johnson. "Au Sable River System Property Owners'
Association. Volunteer efforts to regenerate northern
white cedar along the Upper Au Sable River."

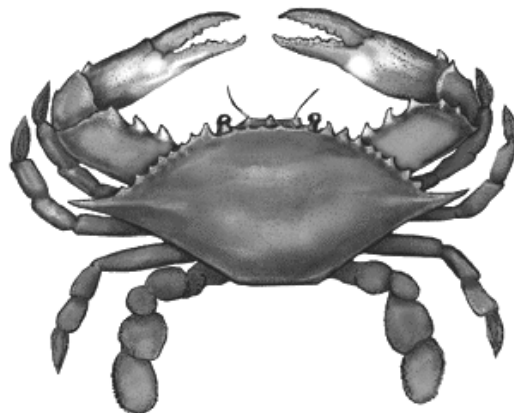
Current research: Information Exchange, Citizen Monitoring and
Agricultural Best Management Practices (USDA).

AFS 2002: Interested in multi-disciplinary sessions on Chesapeake Bay and
African-American Seafaring Heritage?

For more information contact:

Geoffrey Habron
Department of Fisheries and Wildlife
13 Natural Resources Building
East Lansing, MI 48824
517-432-8086 voice
517-432-1699 fax
habrong@msu.edu

Assistant Professor, Michigan State University
Department of Sociology
316 Berkey Hall
East Lansing, MI 48824
517-355-6639 voice
517-432-2856 fax



Publications of Interest

The following publications are listed in the Fish and Wildlife Reference Service Newsletter, Number 127, Winter 2000/01, Fish and Wildlife Reference Service, Suite 110, 5430 Grosvenor Lane, Bethesda, MD 20814-2158, 800-582-3421, FAX (301) 564-4059, fw9_fa_reference_service@fws.gov.

A Study of Marine Recreational Fisheries in Connecticut. MacLeod, R.E., et al. CT DEP. Final Rpt. 1999. 232 pp./3 mf/. MIN 060040027

“The Economic Value of Alaska’s Copper River Personal Use and Subsistence Fisheries.” Henderson, M.M.; Criddle, K.R.; Lee, S.T. AK Fish. Res. Bull. 2000. pp. 63-69 (7 pp.). Vol.6, No.2./1 mf/. MIN 500010205 [NL 126]

Evaluation of Sampling Techniques for the Lake Michigan Angler Survey. Lockwood, R.N. MI DNR. Fish. Div. Res. Rpt. No. 2050. 1999. 30 pp. /1 mf/. MIN 210040029

Angler Surveys of Southern California Urban Lakes, 1993-95. Sunada, J.S.; Lynch, R. CA Dept. F&G. Inland Fish. Admin. Rpt. No. 98-11. 1998. 28 pp. / 1 mf/. MIN 040040208

“Do Anglers and Fishery Professionals Think Alike?” Connelly, N.A.; Brown, T.L.; Knuth, B.A. Human Dimensions. 2000. pp. 21-25 (5 pp.). Vol. 25, No. 2./ 1 mf/. MIN 310010110

New York Statewide Angler Survey, 1996. Report 5: Insights into the Future of Fishing in New York. Connelly, N.A.; Brown, T.L.; Knuth, B.A. NYS DEC. 1999. 22 pp./1 mf/. MIN 310040401

New York Statewide Angler Survey, 1996. Report 4: Estimated Angler Effort and Expenditures in New York State Counties. Connelly, N.A.; Brown, T.L.; Knuth, B.A. NYS DEC. 1998. 66 pp./1 mf/. MIN 310040400

“Accommodating a Diverse Constituency: A Case for Tournament Anglers.” Gilliland, E.R. In: Proc. 52nd Ann. Conf. SEAFWA (October 3-7, 1998 Orlando, FL). 1998. pp. 62-75 (14 pp.). Vol. 52./1 mf/. MIN 800010215

“A Multiple Market Segmentation of Great Lakes Anglers in New York.” Connelly, N.A.; Brown, T.L.; Knuth, B.A. N. Am. J. of Fish. Manage. 2000. pp. 399-407 (9 pp.). Vol. 20./1 mf/. MIN 310010097 [NL 125]

Angler Attitudes Towards Catch-and-Release Bass Fishing During the Spawning Season. Olson, M.H.; Guthrie, C.A.; Pearsall, W. NYS DEC. Compl. Rpt. 1999. 30 pp./1 mf/. MIN 310040382 [NL 126]

Implications of U.S. Population Growth for Recreational Fishing. Fedler, A. J.; Holdnak, A. U. of FL, Dept. Recreation, Parks & Tourism. n.d. 46 pp./1 mf/. MIN 800040387 [NL 126]

The Future of Fishing in the United States: Assessment of Needs to Increase Sport Fishing Participation. Phase V: Final Report. Recommendations and Strategies. Responsive Management. 1999. 72 pp./1 mf/. MIN 800040025 [NL 124]

“Analysis of the Recreational Fishery and Angler Attitudes Toward Hydrilla in Lake Seminole, A Southeastern Reservoir.” Slipke, J.W.; Maceina, M.J.; Grizzle, J.M. Aquat. Plant Manage. Journal No. 8-985876, AL Agric. Exper. Sta. 1998. pp. 101-107 (7 pp.). Vol. 36./1 mf/. MIN 800010118

The Future of Fishing in the United States: Assessment of Needs to Increase Sport Fishing Participation. Phase III: Nationwide Telephone Survey Results. Responsive Management. USFWS. 1999. 344 pp./4 mf/. MIN 800040038

The Future of Fishing in the United States: Assessment of Needs to Increase Sport Fishing Participation. Phase IV: Youth and Parent Focus Groups. Responsive Management. USFWS. 1999. 34 pp./1 mf/. MIN 800040039

A Social and Demographic Examination of Fishing Participation. Fedler, A.J.; Leahy, K.A. U. of FL, Dept. Recreation, Parks & Tourism. 2000. 50 pp./1 mf/. MIN 800040204 [NL 125]

See ya' in Phoenix!!!!!!!!!!!!

